

# HP Halo Detailed Features List

End-to-End Managed Service



## Halo Video Exchange Network (HVEN) Features

HVEN Availability	Worldwide
Monthly Available Usage	Unlimited Usage
Customer Router, Switch and Software Upgrades	Not Required
Halo Studio Connections with "No-Perceived-Delay"	Always Available
Point-to-Point Gateway Charges (One Participant)	Included
Point-to-Point Gateway Charges (4 Locations, 24 Participants)	Included
One-time Halo Network Installation Fee/Site	Included
Monthly Fees per Halo Studio	Yes, Fees Vary by Location
Customer Network Upgrades	Not Required

## Account Management

Assigned Account Manager	Included
Network Traffic Statistics	Included

## 24x7 Concierge Assistance

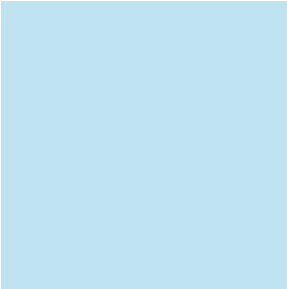
Live Greet	Included
Operator Assistance	Included
Operator Technical Support	Included
Operator Assisted Inter-company Calling	Included

## Multipoint Connection Features

Multipoint Feature (Connects Multiple Locations)	Included
Multipoint Hardware for Multiple Locations	Included
Two-click Multipoint Initiation	User Initiated
Bandwidth Scheduling	Not Required
Ad-hoc Conferencing (Extending Two Studio Connections to Four)	Included
Site Names Displayed	Included
Audio Bridge Connect	Included
Click and Connect Software	Included
Directory Manager	Included
Number of Simultaneous Telepresence Studio Connections	4
Optimized Number of Telepresence Participants per Studio	6
Max Number of Telepresence Participants per Studio	12
Max Number of H.323 Video Stream Connections*	20*

## Video Network Security

Private Dedicated Network (Fiber Optic Global Backbone)	Included
Key per Telepresence Session	Included**
AES-256 Encryption	Included**
Entry and Exit Private Tones	Included
Remote Asset Monitoring	Included
Anti-spoofing and Access Filtering	Included
Network Firewall	Included



Studio/Room Certification and Monitoring	
Dedicated Network Operations Management Center	Included
Room/Studio Certification	Included
24-hour Remote Studio/Room Maintenance	Included
24-hour Remote Pro-active Diagnostics	Included
Remote Calibration	Included
Customer Training and Development for Telepresence	Included
On Site Studio Repair Response Time	Varies by Location
Local Language for Customer Support Issues	Included
Upgrades and Obsolescence	
Hardware Repair and Replacement (Includes TVs, Encoders, etc.)	Included
Eligible Software and Refreshes	Included
Language Services	
Third Party Global Interpretation Services	Available***
Studio/Room Scheduling	
HP-Provided Training for MS Outlook Implementation	Available***
Audio Bridge Connection from Studio	Included
Connection Support Available for Audio Conferencing	Included
Collaboration Screen	
Dedicated Hi-definition Collaboration Channel at 15 Mbps	Included
Data File Sharing Ability on Collaboration Channel	Included
Hi-resolution/Hi-definition Overhead Object Camera <sup>†</sup> Connectivity	Included
3D Visualization Ability on Collaboration Channel	Included
Full-motion (30 fps) Video Ability on Collaboration Channel	Included
Connectivity and Halo Studio Directory	
Local DS3 Connectivity	Included
Connectivity to Corporate Intranet	Included
Global Halo Studio Directory	Included
Click and Connect Software (Through Directory)	Included
Media Connectivity (CD, DVD)	Included
Industry-standard H.323 Endpoint Connectivity <sup>††</sup>	Included
Quality of Service	
QOS Enabler	Dedicated Network Built on OC-Class Backbone
QOS Level	Platinum Class Worldwide (As Compared to G/S/B Industry Standard MPLS Services)
Audio	Fully-Duplexed Spatial Audio with Echo Cancellation
Traffic Priority	Dedicated Video Network
SLAs	Yes
Latency	"No-Perceived-Delay"
Port Availability	Always Available, Instant On

Please visit [www.hp.com/halo/contact\\_email.html](http://www.hp.com/halo/contact_email.html) today and connect with a Halo business specialist to schedule a demonstration, receive additional information about Halo or find out how Halo can help transform your business.

\* This implementation is available beginning with the TANDBERG 6000 MXP system connected to a Halo studio. This is scheduled to be available in 2H CY 2007.

TANDBERG is a trademark or registered trademark in the U.S. and other countries.

\*\* Available in 2H CY 2007.

\*\*\* Additional charges may apply.

<sup>†</sup> Halo Collaboration Studio only.

<sup>††</sup> Connection and service charges may apply.

© 2007 Hewlett-Packard Development Company, L.P. The information contained herein is subject to change without notice. The only warranties for HP products and services are set forth in the express warranty statements accompanying such products and services. Nothing herein should be construed as constituting an additional warranty. HP shall not be liable for technical or editorial errors or omissions contained herein.

