

Compete with powerful high performance computing clusters

HP BladeSystem and Microsoft® Windows® Compute Cluster Server (CCS)

HP BladeSystem Solution Block



Overpower big compute challenges with strength, agility, and endurance

To be competitive in the world of sports, every athlete must possess superior physical skills – strength, agility, and endurance. Without these basic skills, the athlete will probably not succeed.

Many small to mid-sized businesses and workgroups of large organizations race to remain competitive in industries such as manufacturing, life sciences, oil and gas, and financial services. To achieve their goal, they too need strength, agility, and endurance. Strength improves the quality and variety of products and services. Agility reduces time to market. And endurance ensures that their investments will keep them competitive today and in the future. Because high performance computing (HPC) clusters take advantage of the outstanding price/performance and parallel processing capabilities of industry-standard systems, they deliver the strength and agility organizations need to remain competitive, without breaking their budgets.

Versatile and cost-effective

Just as successful athletes need superior equipment, so does your business. The HP BladeSystem c3000 provides a versatile and cost-effective enclosure that consolidates hardware resources (compute, storage, network, and power) into a single box that is easily deployed standalone or integrates into your existing cluster infrastructure. HP's industry-leading HPC technologies are included in the HP BladeSystems, such as support for the latest multi-core processors from AMD and Intel, an option for the DDR InfiniBand interconnect, and innovative power efficiency and cooling—all while delivering outstanding performance.

Microsoft® Windows® Compute Cluster Server 2003 (CCS) is an integrated, standards-based compute clustering platform. Windows CCS makes HPC

clusters easier to design, integrate and manage within organizations, making employees more productive. The unbeatable combination of HP BladeSystem c3000 and Windows CCS offers a versatile and cost-effective solution for small to mid-sized organizations who want to tackle compute-intensive workloads and accelerate product development and discovery cycles.

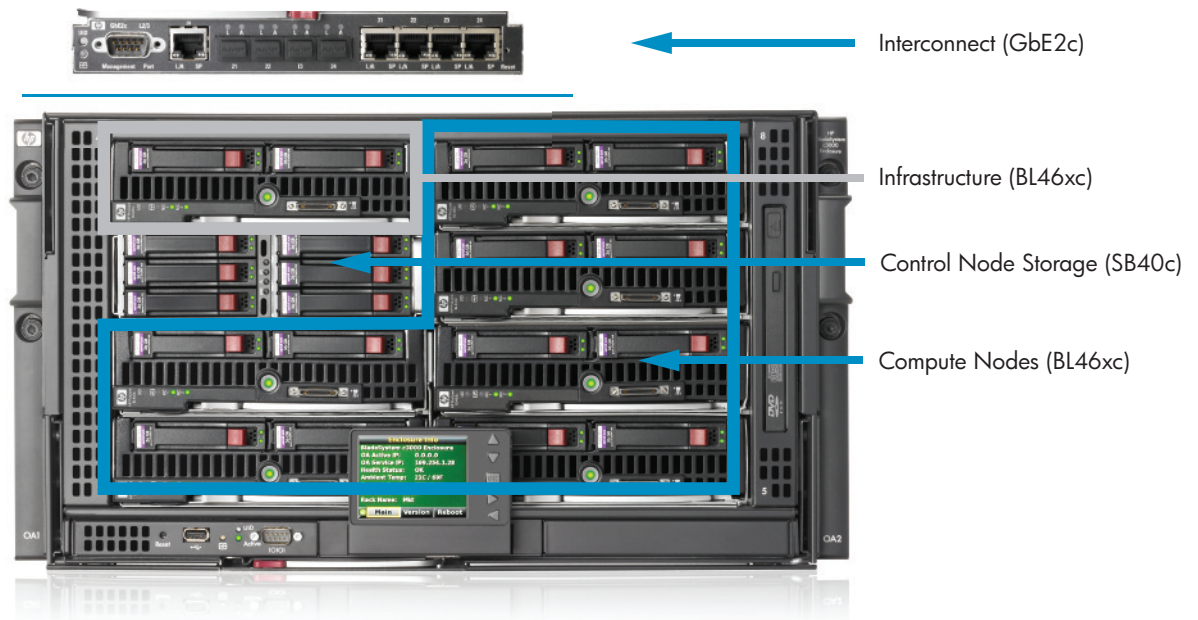
Capitalizing on change

Change is inevitable in a growing, competitive business. HP makes it possible for you to transition from the desktop to an HPC cluster environment using a familiar Windows environment. Windows CCS delivers single system simplicity and manageability. Application-ready for rapid deployment, the solution includes Windows Server 2003, Compute Cluster Edition (CCE) and Microsoft Compute Cluster Pack (CCP) for cluster management, job scheduler and MPI. Your investment in an HP BladeSystem and Windows CCS is well-protected even as your workload changes. All components (server blades, storage blades, network switches) are industry-standard and can be redeployed to improve ROI. In addition, HP provides a single support contact for both products.

Windows CCS on HP Cluster Platforms is part of HP's Unified Cluster Portfolio, an innovative package of hardware, software, and services for scalable computation, data management, and visualization. The portfolio simplifies change with proven, open source and commercial software. Pre-tested hardware and software configurations, available as HP BladeSystem solution blocks, enable rapid deployment.

HP BladeSystem solution

- HP BladeSystem Solution Blocks—proven application solution definitions that cut the time and effort needed to create, combine and upgrade solutions on an HP BladeSystem
- Storage capacity via local file services, or external SAN/LAN connectivity
- Single host name and IP address, with private internal network
- CCS supplies deployment wizard for easy set up of clusters
- CCS cluster management provides familiar tools for system monitoring, security, and system administrative tasks.
- CCS includes a built-in job scheduler for easy and optimal use of cluster resources.
- Optional HP-MPI on CCS offers a robust, scalable, and high performance parallel environment



Bill of Materials

- 1 HP BladeSystem c3000 enclosure
- Up to 8 HP BladeSystem BL46xc with 2 Dual-Core Processors
- 1 HP GbE2c Layer 2/3 Ethernet Blade Switch
- 1 HP SB40 Storage Blade (optional)
- Windows CCS 2003 Software
- Optional integration and installation services

The bottom line is value

HPC growth has averaged more than 20 percent in the past four years¹, and HPC standards-based systems are expected to grow even faster. You can increase the competitiveness of your small business or workgroup by joining the HPC race with standards-based HP clusters. The HP BladeSystem and Windows CCS will help your engineers and scientist compete at their highest level, focusing on applications and outcomes instead of computing issues

¹IDC, Q107 Worldwide Quarterly Server Tracker, May 2007

Your next step

Imagine a cluster system with enhanced density and modularity that does not require a data center with special power, cooling, or IT staff. Now envision this solution seamlessly integrated into your existing infrastructure. Accelerate your business or research with the speed, agility, and endurance of the HP BladeSystem and Windows CCS. Call your local authorized HP reseller today.

For more information, visit www.hp.com/go/hptc

© 2007 Hewlett-Packard Development Company, L.P. The information contained herein is subject to change without notice. The only warranties for HP products and services are set forth in the express warranty statements accompanying such products and services. Nothing herein should be construed as constituting an additional warranty. HP shall not be liable for technical or editorial errors or omissions contained herein.

